

W6 GWR Collett CORRIDOR THIRD

C54

Introduced 1925, last withdrawn 1963

57'

These etched sides can be built into a complete coach using products from our range as supplied in our full kits. Please refer to the panel opposite. Should you prefer they can also be used for scratchbuilding.

The 57' bow ended design followed on from the 70' coaches introduced in 1922 and were externally similar. When first introduced they went into premier express services, often in 6 coach sets, on trains such as the Bristolian and the Cheltenham Flyer. They were dispersed more widely as newer designs were introduced.

Sample formations

6.35pm Paddington-Cheltenham 1931 BTK /CK /BTK/**TK**/TK/RC/FK/BFK
 | Hereford | Cheltenham |

Paddington-Birkenhead 1938 BTK/**TK**/FK/BTK/RC/BTK/BTK/BCK/CK/BTK/CK¹/BCK²/BCK³
 | Birkenhead | Wolverhampton |
¹ slipped at Bicester ² from Penzance ³ from Carmarthen

9.07am Paddington-Exeter 1951 BTK/**TK**/CK/CK/**TK**/BCK/RU/BCK
 | Exeter | Bristol |

Running numbers

4545-4556	built 1925	4857-4912	built 1927	5145-5154	built 1929
4557-4562	built 1926	5001-5086	built 1928	5156-5180	built 1929
4776-4854	built 1926				

Livery

From 1922 onwards coaches were painted chocolate and cream, with white roofs. Droplights were painted 'mahogany'- a sort of brick red. The coaches were pseudopanelled, the panelling being picked out in black edged with gold. Letters and numerals were gold shaded black. A Garter Crest was placed centrally in the lower panel with the Coats of Arms of London and Bristol flanking it. GWR was placed directly above the crest. Numbers were placed at both ends in the waist panel.

In 1927 pseudopaneling was abandoned. Coaches were plain chocolate and cream with a gold line at the boundary. There was a brown line at the eaves approx 4" deep.

In 1928 the Garter Crest went and was replaced by a new Coat of Arms in which the London and Bristol crests reverted to their correct heraldic position above the shield. Class wording in the waist panel on the doors was continued, and numbers were placed at each end of the coach.

In 1930 along with new coaches for the Torbay and Cornish Riviera Expresses came an elaboration in the form of a completely lined waist panel, the 'double lined' variant. This was soon extended to all existing express stock, but not cross-country and non-corridor stock. Thirds were not marked, only firsts, but with the introduction of stock with end doors only it became necessary to reintroduce the 'third' to avoid confusion, particularly with composites. In 1934 the Garter Crest and Coats of Arms were replaced by the 'shirt button' monogram.

The final GWR style appeared from 1943 onwards. The cream panel extended from 7" below the cantrail down to 1 1/2" below the windows. Double lining was applied, the lower waist line being 7" below the upper one. Lining was black and gold, and numbers were in the lining panel at both ends. Roofs were painted grey. The monogram was replaced with the new Coat of Arms in the centre of the panel flanked by the words 'Great' and 'Western'. This was later extended to all coaches built since 1936 which had the double lined waist style.

From 1949 they received BR livery of carmine and cream with gold and black lining. The cream panel was the full height of the windows plus an inch top and bottom. The black line was against the cream. From 1956 they were painted maroon lined gold/black/gold at the waist and black/gold above the windows.

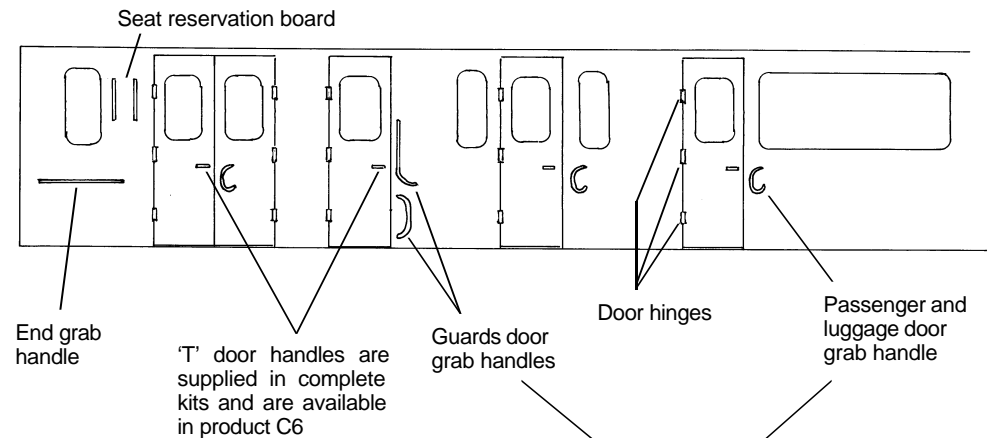
COMET MODELS coach components required to complete this coach are as follows

Underframe	UW3	Bogies	BW2
Underframe castings	UCW1	Roof castings	RC5
Ends	EW1	End castings	ECW2
Roof	C10	Interior	INT1
Grab Handles	C8		

Further information

GWR Coaches 1890-1954	Harris	David & Charles
GWR Coaches Vols I & II	J H Russell	O.P.C.
GWR Coaches Appendix II	J H Russell	O.P.C.
Great Western Way	J N Slinn	H.M.R.S.

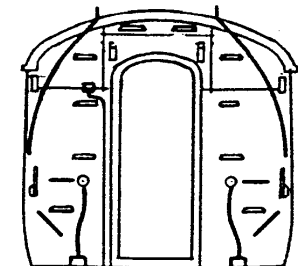
Scrap view of side showing additional detailing

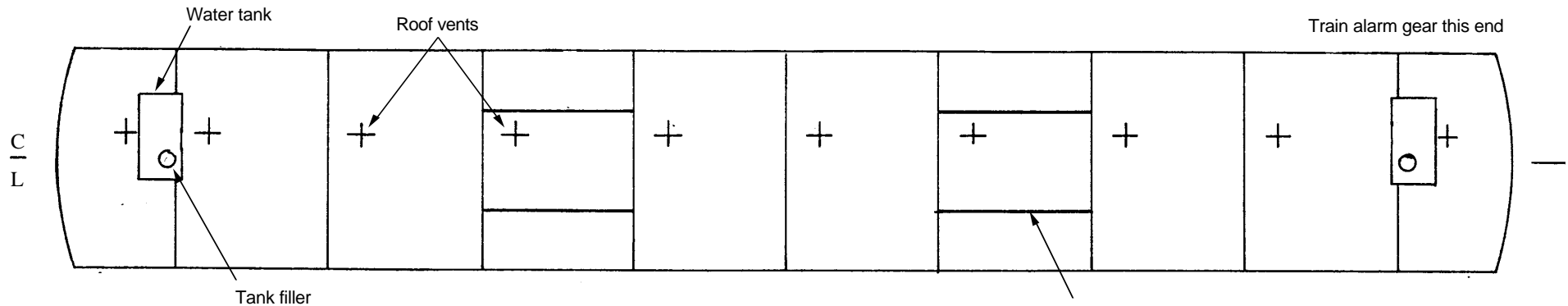


Door hinges, gangway suspension brackets, train alarm gear ears, gangway end covers and solebar ascending steps are available in product C26

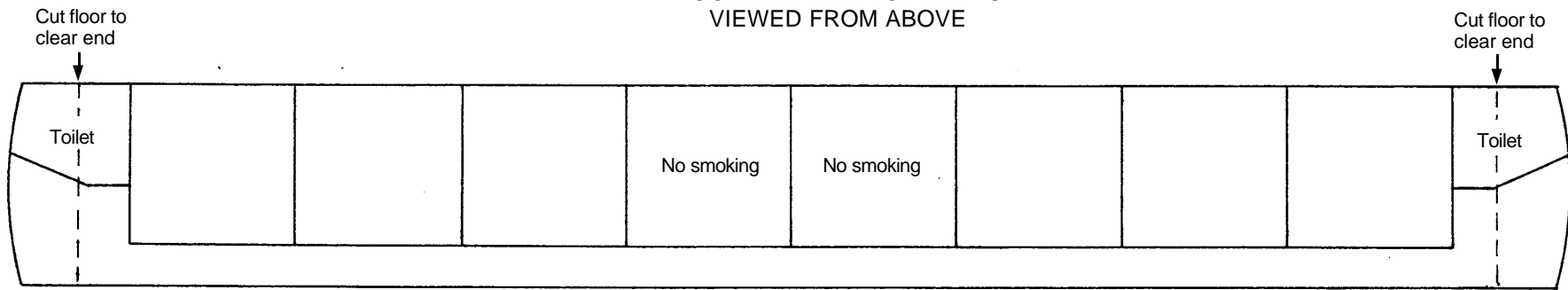
Passenger, luggage and guards door grab handles are available in product C8

The ends are identical except that the train alarm gear is only fitted at the end shown on the roof plan overleaf





ROOF AND INTERIOR PLANS
VIEWED FROM ABOVE



UNDERFRAME VIEWED FROM BELOW

