

## W15 GWR Collett CORRIDOR BRAKE THIRD

D127

Introduced 1938, last withdrawn 1964

61'

These etched sides can be built into a complete coach using products from our range as supplied in our full kits. Please refer to the panel opposite. Should you prefer they can also be used for scratchbuilding.

The 'Sunshine Stock' (also known as 'new type') were introduced in 1936 and entered service on premier expresses such as the 'Bristolian' and the 'Cheltenham Flyer'. Subsequently they were cascaded into general service. The name derived from the large picture windows on the corridor side. They had end vestibules and a mix of window sizes with 4' for 3rd class and 5' for 1st class. Sliding vents were provided in some corridor windows.

### Sample formations

The Bristolian	<b>BTK/TK/CK/RC/CK/TK or CK/BTK</b>
07.25 Cheltenham, Swindon, Didcot Reading, Paddington	<b>BTK/CK/TK/BTK/CK/BTK/BTK/FK/TK</b> I Cheltenham I Didcot I Reading I
10.30 Cardiff, Bristol, Bath, Salisbury, Fareham, Portsmouth	<b>BTK/TK/CK/BTK/BCK</b> I Plymouth & Ssea I Fareham
12.30 Plymouth, Exeter, Bristol, Pontypool Road, Hereford, Shrewsbury, Crewe, Liverpool	<b>BTK/CK/CK/BTK/BCK/BTK<sup>2</sup>/RC<sup>1</sup>/CK<sup>2</sup>/BTK<sup>2</sup>/BCK/BCK</b> Ppool Rd I N'ton Abbot I Plymouth I PpoolRd <sup>1</sup> alternating LMS/GWR <sup>2</sup> LMS coaches
15.55 Bristol, Weston, Bridgewater Taunton, Newton Abbot, Kingswear	<b>BTK/CK/BTK/BTK/CK/BTK</b>
18.55 Paddington, Maidenhead, Reading, Didcot, Oxford	<b>BTK/TK/CK/BTK/TK/FK/BTK</b> I Oxford I Reading I

### Running numbers

1627-1647	built 1938	601-625	built 1939
1649-1654	built 1938	652-675	built 1941

### Livery

The coaches were painted in chocolate and cream with white roofs and carried the 'shirtbutton' monogram. Droplight frames were in Indian Red (brick red).

The final GWR style appeared from 1943 onwards. The cream panel extended from 7" below the cantrail down to 1½" below the windows. Double lining was applied, the lower waist line being 7" below the upper one. Lining was black and gold, and numbers were in the lining panel at both ends. Roofs were painted grey. The monogram was replaced with the new Coat of Arms in the centre of the panel flanked by the words 'Great' and 'Western'. This was later extended to all coaches built since 1936 which had the double lined waist style.

From 1949 they received BR livery of carmine and cream with gold and black lining. The cream panel was the full height of the windows plus an inch top and bottom. The black line was against the cream. From 1956 they were painted maroon lined gold/black/gold at the waist and black/gold above the windows.

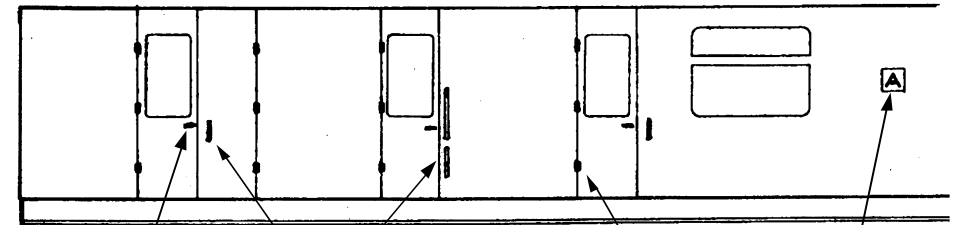
### Further information

GWR Coaches 1890-1954	Harris	David & Charles
GWR Coaches Vols I & II	J H Russell	O.P.C.
GWR Coaches Appendix II	J H Russell	O.P.C.
Great Western Way	J N Slinn	H.M.R.S

COMET MODELS coach components required to complete this coach are as follows

Underframe	UW2	Bogies	BW4
Underframe castings	UCW1	Roof castings	RC5
Ends	EW2	End castings	ECW2
Roof	C10	Interior	INT1

Scrap view of side showing additional detailing



'T' door handles are supplied in complete kits and are available in product C6

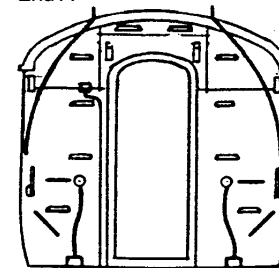
Make grab handles from 0.45mm wire

Door hinges

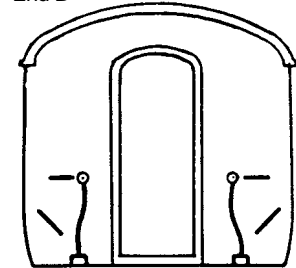
Seat reservation board

Door hinges, gangway suspension brackets, train alarm gear ears, gangway end covers and solebar ascending steps are available in product C26

End A

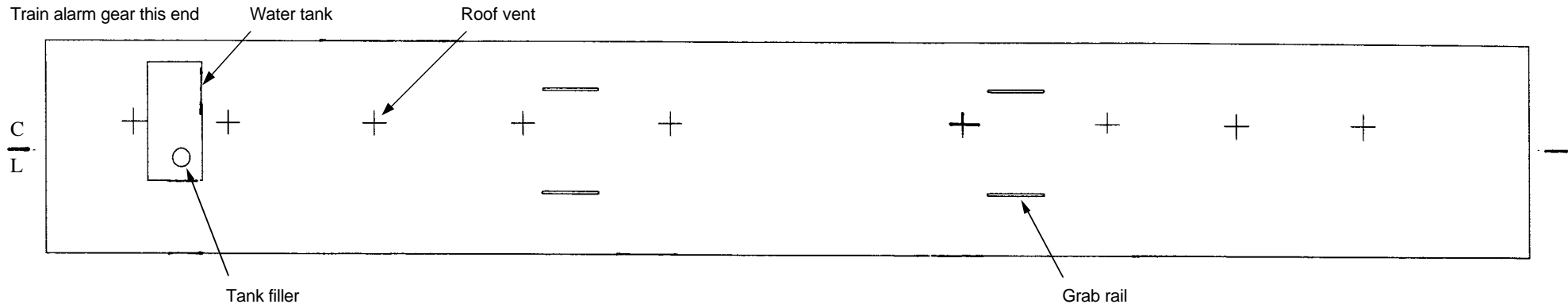


End B

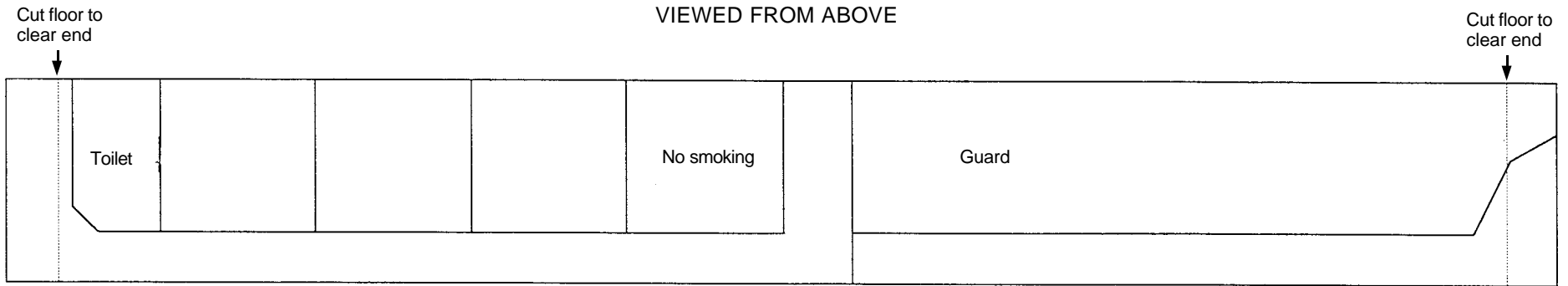


End A

End B



ROOF AND INTERIOR PLANS VIEWED FROM ABOVE



UNDERFRAME VIEWED FROM BELOW

