

M69 LMS Stanier BUFFET CAR

D1948

Introduced 1936, last withdrawn 1963

57'

These etched sides can be built into a complete coach using products from our range as supplied in our full kits. Please refer to the panel opposite. Should you prefer they can also be used for scratchbuilding.

This was a standard period III design and 4 were built for use on services which did not require more extensive catering facilities. These included the afternoon Euston-Manchester trains in both directions and the Manchester-York-Sheffield-Birmingham-Worcester route.

Sample formations

Liverpool-Hull 1949

TK/BTK/CK/CK/CK/RB/TO/TO/TO/TO/BTK/TK

Liverpool-Hull 1954

TK/BTK/CK/CK/RB/TK/TK/TK/BTK

Running numbers

131-134 built 1936 Derby

Livery

The LMS coach body colour was maroon with black ends. Simple lining was adopted at the beginning of 1934. In 1946 the yellow was replaced with a much lighter shade referred to as 'straw'. From 1949 coaches received BR crimson and cream. From 1956/7 BR maroon with simple lining was adopted.

Number and lettering styles, insignia and class designation placement did not always follow the changes of livery. For further information on a particular vehicle at a specific date please consult references and photographs.

Coaches left the works with the roof finished in a metallic aluminium paint. However, in service this quickly took on an overall muddy grey colour.

Underframes and bogies were finished in black

Further information

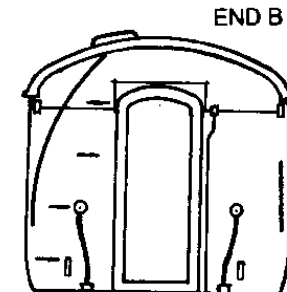
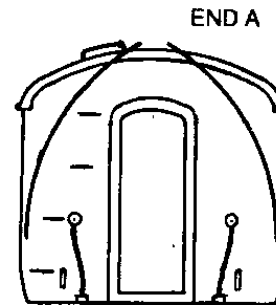
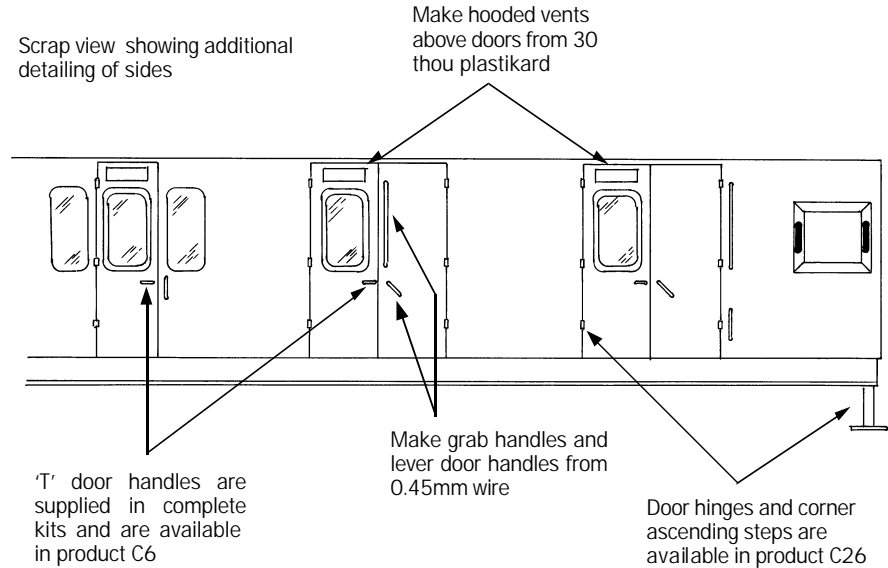
LMS Coaches
Historic Carriage Drawings
Passenger Train Formations
1923-1983 LMS LM Region

Jenkinson & Essery
Jenkinson & Campling
Clive S Carter

O.P.C.
Ian Allan
Ian Allan

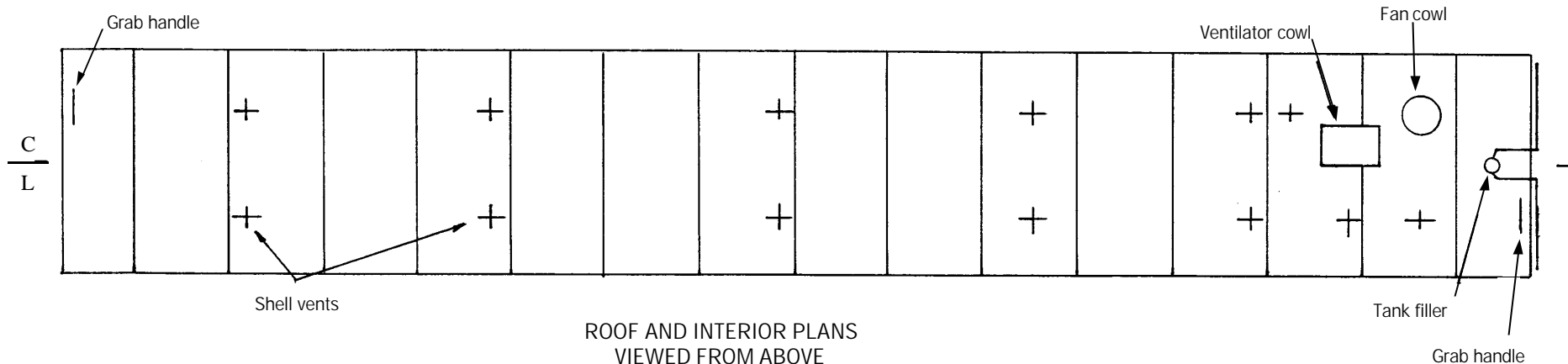
COMET MODELS coach components required to complete this coach are as follows

Underframe	UM2	Bogies	BM2
Underframe castings	UCM1	Roof castings	RC2/4
Ends	EM3	End castings	ECM2
Roof	C10	Interior	INT3

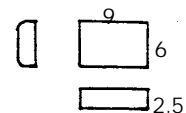


End B Train alarm gear this end

End A

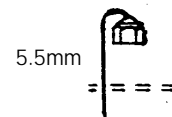


Ventilator cowl from plastikard

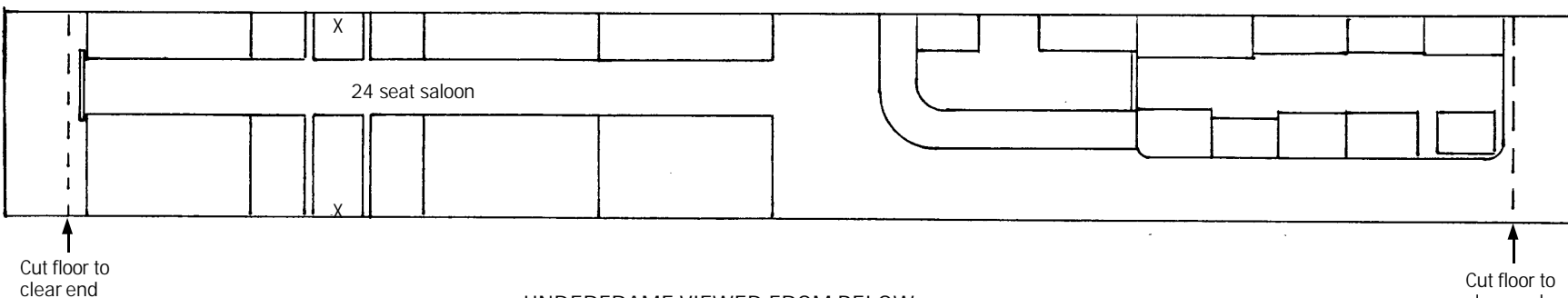


Drill 2 x 2.5mm holes in roof under cowl position and superglue from below

Table lamp -not to scale



Lamps made from 14BA hex nuts soldered to 0.45mm wire and fixed into holes drilled in the tables as shown at X.



UNDERFRAME VIEWED FROM BELOW

