

## M68 LMS Stanier SLEEPER COMPOSITE

D1947

Introduced 1936, last withdrawn 1964

69'

These etched sides can be built into a complete coach using products from our range as supplied in our full kits. Please refer to the panel opposite. Should you prefer they can also be used for scratchbuilding.

13 of these 68' sleeper composites were built at Derby in 1936 with bogies built at Wolverton. They accommodated 14 third class passengers in three 4 berth and one 2 berth cabins. First class passengers had six cabins in pairs with interconnecting doors. These latter pairs were decorated individually in blue, beige and green colour schemes. From introduction the coaches were equipped with 'Thermo Reg' heating and ventilation.

### Sample formations

Royal Highlander BG/CK/**SLC**/BG/TK/**SLC**/BG/BG/**SLC**/RC  
 | Glasgow | Aberdeen | Perth |

St Pancras-Edinburgh 1955 BG/**SLC**/**SLC**/SLT/SLF/CK/CK/TK/TK/TK/BG

### Running numbers

712-724 built 1936 Derby

### Livery

The LMS coach body colour was maroon. Ends were also maroon with the detail picked out in black, but from the end of 1936 they were painted all over black. Simple lining was adopted at the beginning of 1934. In 1946 the yellow was replaced with a much lighter shade referred to as 'straw'. From 1949 coaches received BR crimson and cream. From 1956/7 BR maroon with simple lining was adopted.

Number and lettering styles, insignia and class designation placement did not always follow the changes of livery. For further information on a particular vehicle at a specific date please consult references and photographs.

Coaches left the works with the roof finished in a metallic aluminium paint. However, in service this quickly took on an overall muddy grey colour.

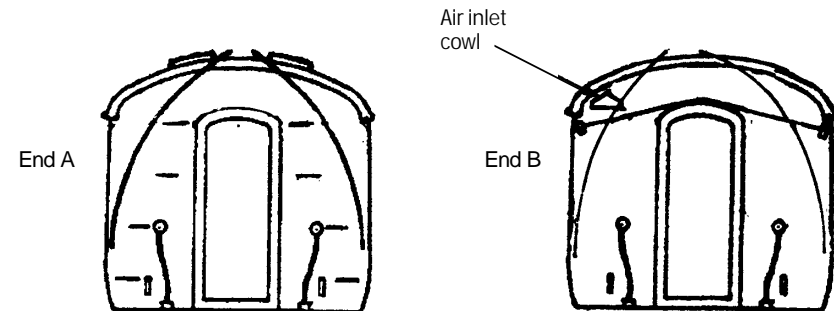
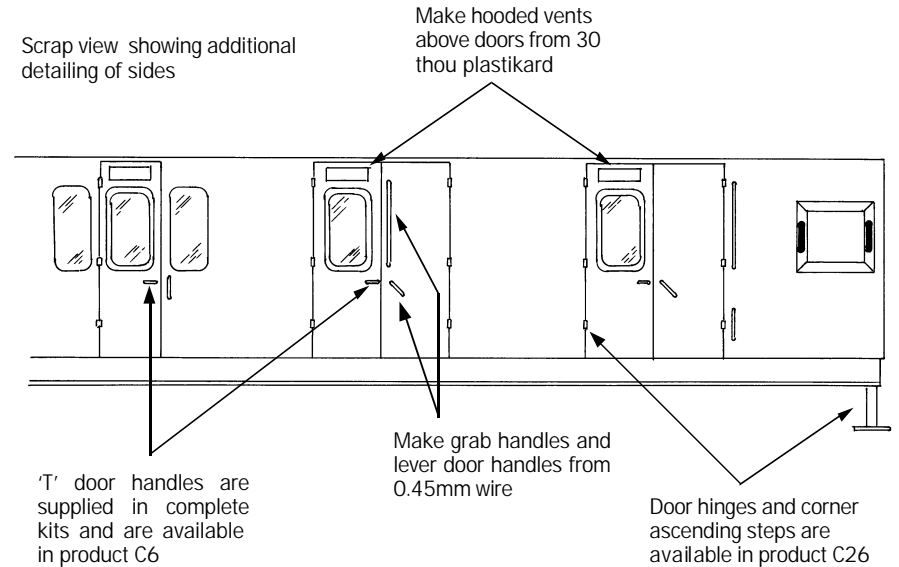
Underframes and bogies were finished in black

### Further information

LMS Coaches	Jenkinson & Essery	O.P.C.
Historic Carriage Drawings	Jenkinson & Campling	Ian Allan
Passenger Train Formations		
1923-1983 LMS LM Region	Clive S Carter	Ian Allan

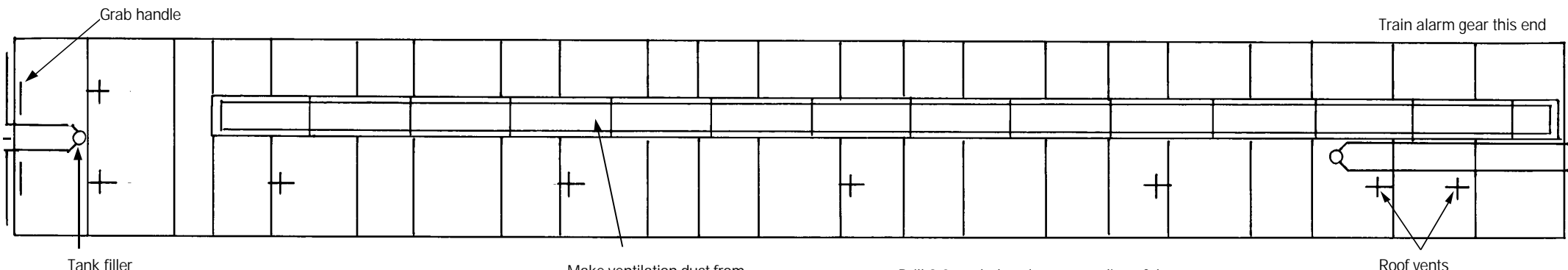
COMET MODELS coach components required to complete this coach are as follows

Underframe	UM1	Bogies	BM1
Underframe castings	UCM1	Roof castings	RC2
Ends	Special	End castings	ECM4
Roof	C10	Gas cylinder	C18



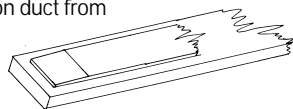
End A

End B

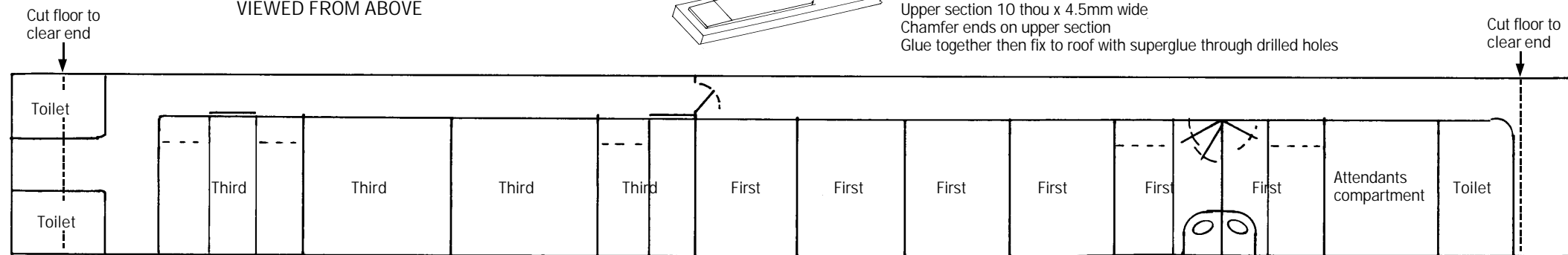


ROOF AND INTERIOR PLANS VIEWED FROM ABOVE

Make ventilation duct from plastikard



Drill 2.0mm holes along centre line of duct  
 Lower section 30 thou x 7mm wide  
 Upper section 10 thou x 4.5mm wide  
 Chamfer ends on upper section  
 Glue together then fix to roof with superglue through drilled holes



UNDERFRAME VIEWED FROM BELOW

