

M61 LMS Stanier RESTAURANT COMPOSITE

D1938

Introduced 1936, last withdrawn 1963

68'

These etched sides can be built into a complete coach using products from our range as supplied in our full kits. Please refer to the panel opposite. Should you prefer they can also be used for scratchbuilding.

Restaurant composite coaches were used in the shorter expresses or through portions of longer formations where the limited number of meals required did not warrant the use of a full kitchen and open diners. The vehicles were 'neutral', with the class and seating being adjusted by staff to accommodate the demand. These cars were upgraded by comparison to the earlier D1811 type, being fitted with pressure heating and ventilation.

Sample formations

Carlisle Perth 1938	BCK/RC/TO/BTK/BG/BG/POS
Glasgow Oban 1938	BCK/TK/BTK/TO/TO/RC/FO/BTK
Granite City 1949	TK/TK/BTK/TK/CK/CK/RC/TO/CK/BTK/BG
Granite City 1958	BSK/SK/FK/RC/SO/SK/SK/BSK/BG
	All BR Mk1 stock except RC

Running numbers

240-252 built 1936/7

Livery

The LMS coach body colour was maroon with black ends. Simple lining was adopted at the beginning of 1934. In 1946 the yellow was replaced with a much lighter shade referred to as 'straw'. From 1949 coaches received BR crimson and cream. From 1956/7 BR maroon with simple lining was adopted.

Number and lettering styles, insignia and class designation placement did not always follow the changes of livery. For further information on a particular vehicle at a specific date please consult references and photographs.

Coaches left the works with the roof finished in a metallic aluminium paint. However, in service this quickly took on an overall muddy grey colour.

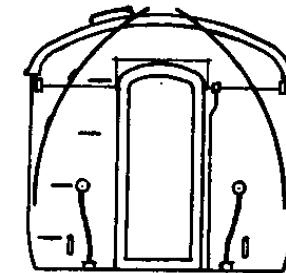
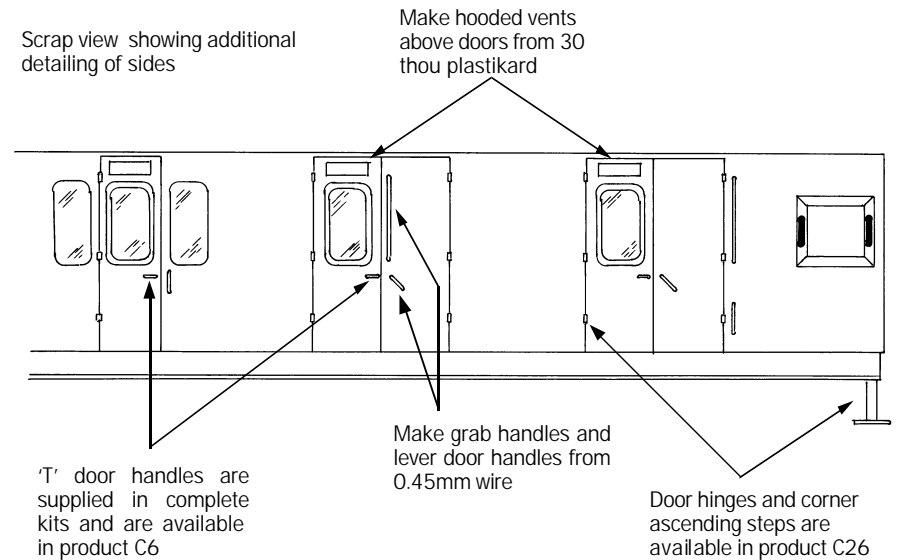
Underframes and bogies were finished in black

Further information

LMS Coaches	Jenkinson & Essery	O.P.C.
Historic Carriage Drawings	Jenkinson & Campling	Ian Allan
Passenger Train Formations 1923-1983 LMS LM Region	Clive S Carter	Ian Allan

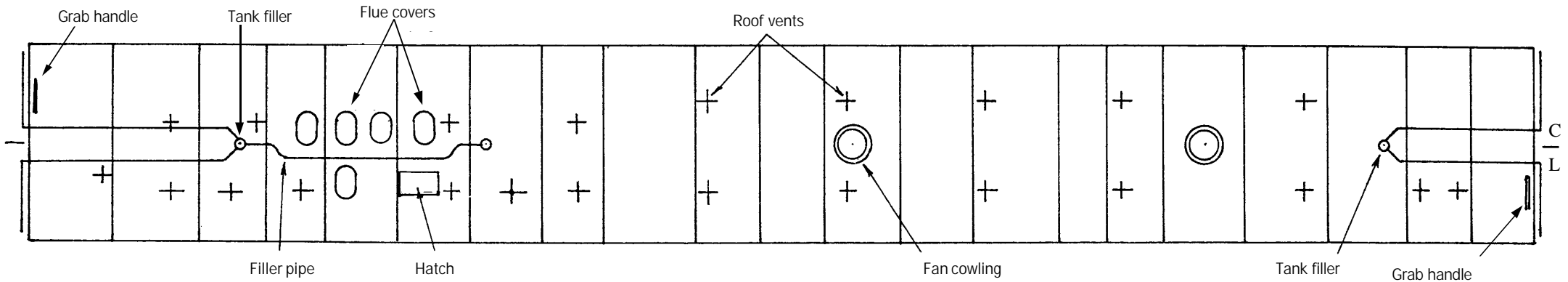
COMET MODELS coach components required to complete this coach are as follows

Underframe	UM1	Bogies	BM1
Underframe castings	UCM1	Roof castings	RC2/4
Ends	EM3	End castings	ECM4
Roof	C10	Interior	INT3
Gas cylinders	C18		

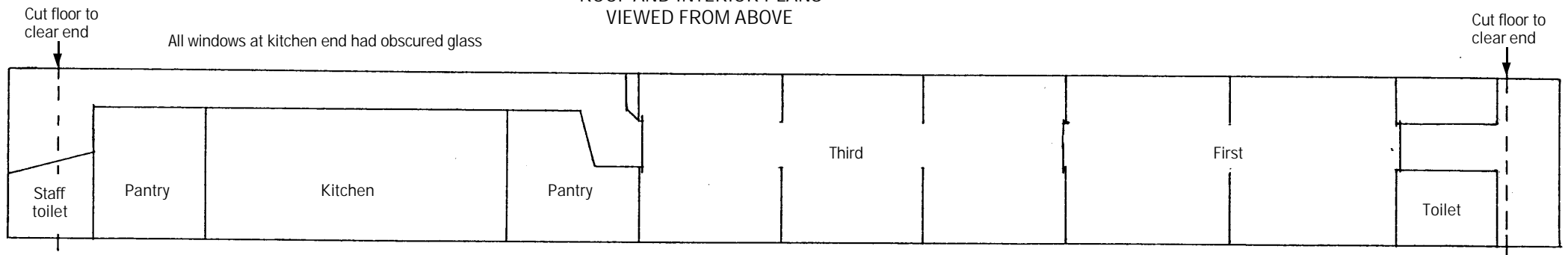


The ends are identical except that the train alarm gear is only fitted at the end shown on the roof plan overleaf

Train alarm gear this end



ROOF AND INTERIOR PLANS VIEWED FROM ABOVE



UNDERFRAME VIEWED FROM BELOW

