

M60 LMS Stanier CORRIDOR BRAKE FIRST

D1910/1961

Introduced 1934, last withdrawn 1965

57'

These etched sides can be built into a complete coach using products from our range as supplied in our full kits. Please refer to the panel opposite. Should you prefer they can also be used for scratchbuilding.

Although only 9 coaches were built to D1910 it was the standard period III brake first and saw use on premier express workings. A further 3 were built to D1961 with pressure ventilation and luxury 2 a side seating for use in the Coronation Scot.

Sample formations

Lancastrian 1934	BTK/TO/TO/RK/FO/CK/CK/ BFK /TO/TK/TK
Coronation Scot 1937	BTK/TO/RK/TO/TO/RK/RFO/FK/ BFK
Thames Clyde 1938	BTK/TK/TO/TO/RK/CO/CK/ BFK
Euston Stranraer Perth Aberdeen 1949	BTK/TO/TO/RT/CO/CK/CK/ BFK /BG/TO/TO

Running numbers

5051	D1910 built 1934	Derby
5055-5062	D1910 built 1938	Wolverton
5052-5054	D1961 built 1937	Wolverton

Livery

The LMS coach body colour was maroon. Ends were also maroon with the detail picked out in black, but from the end of 1936 they were painted all over black. Simple lining was adopted at the beginning of 1934. In 1946 the yellow was replaced with a much lighter shade referred to as 'straw'. From 1949 coaches received BR crimson and cream. From 1956/7 BR maroon with simple lining was adopted.

Number and lettering styles, insignia and class designation placement did not always follow the changes of livery. For further information on a particular vehicle at a specific date please consult references and photographs.

Coaches left the works with the roof finished in a metallic aluminium paint. However, in service this quickly took on an overall muddy grey colour.

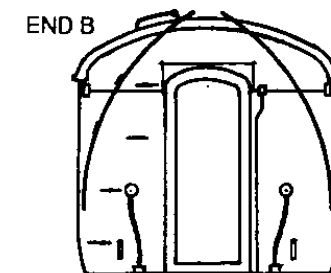
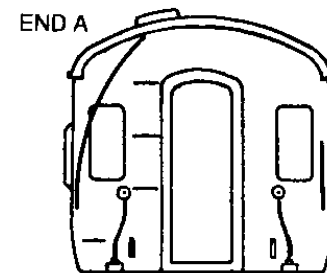
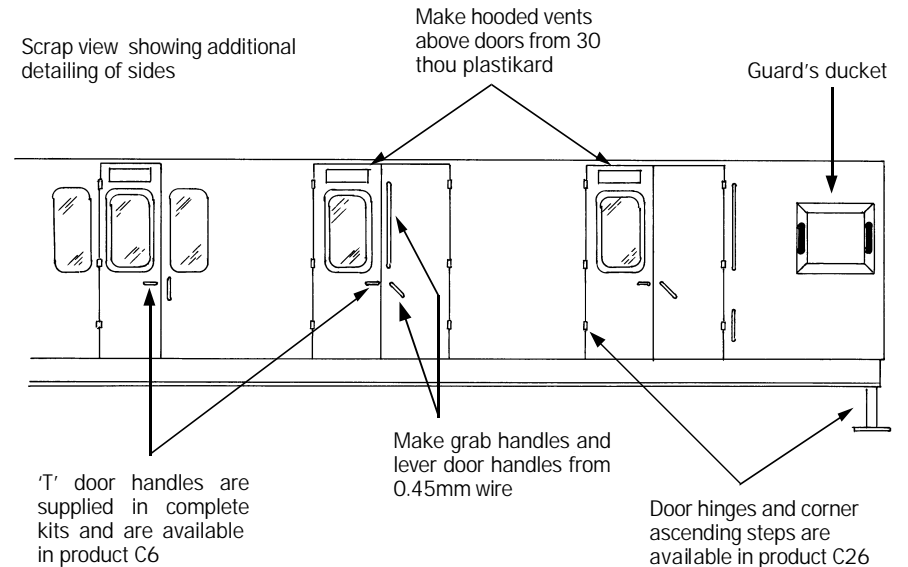
Underframes and bogies were finished in black

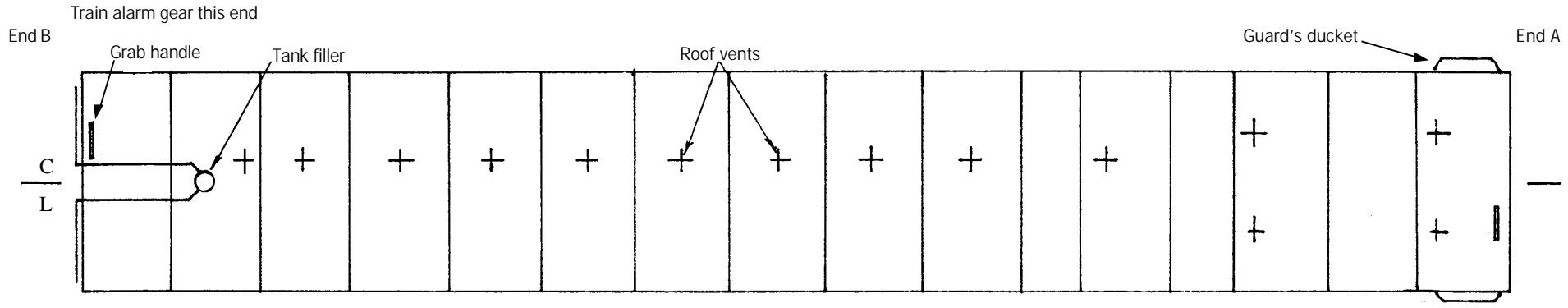
Further information

LMS Coaches	Jenkinson & Essery	O.P.C.
Historic Carriage Drawings	Jenkinson & Campling	Ian Allan
Passenger Train Formations 1923-1983 LMS LM Region	Clive S Carter	Ian Allan

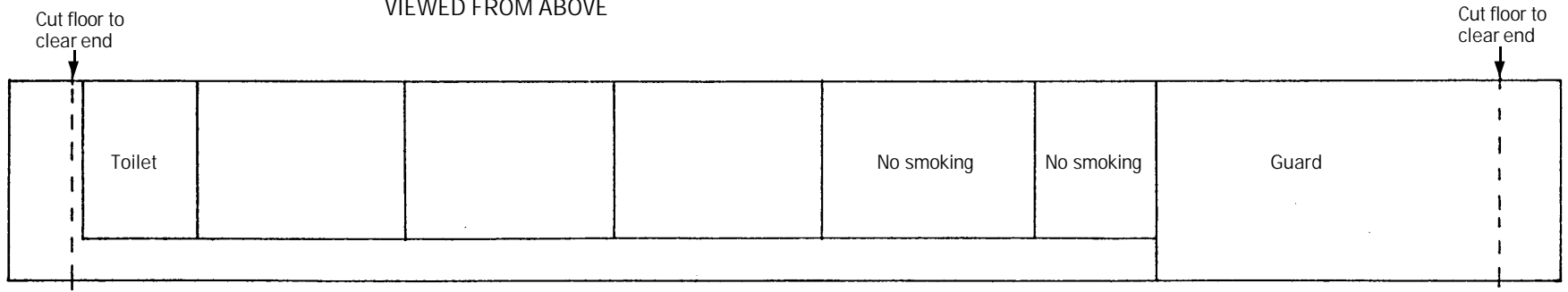
COMET MODELS coach components required to complete this coach are as follows

Underframe	UM2	Bogies	BM2
Underframe castings	UCM1	Roof castings	RC2
Ends	EM4	End castings	ECM2
Roof	C10	Interior	INT2
Duckets	C15		





ROOF AND INTERIOR PLANS VIEWED FROM ABOVE



UNDERFRAME VIEWED FROM BELOW

