

## M46 LMS Stanier CORRIDOR BRAKE THIRD (PORTHOLE STOCK) D2161

Introduced 1949, last withdrawn 1970's 57'

These etched sides can be built into a complete coach using products from our range as supplied in our full kits. Please refer to the panel opposite. Should you prefer they can also be used for scratchbuilding.

Although an LMS design, these distinctive coaches, with their round 'Porthole' toilet windows, were built at Wolverton by BR. With a total of 439 in service they were a common sight on all types of passenger workings. They survived in revenue service long enough for some to receive the BR corporate blue/grey livery introduced from 1964, the only ex-LMS types so treated apart from one sleeper first to D2166.

### Sample formations

Midland Division sets	<b>BTK/TK/CK/BTK</b>
Birmingham-Newcastle 1954	<b>BTK/TK/CK/CK/TK/BTK/RB/BTO</b>   ER stock
Liverpool-Hull 1954	<b>TK/BTK/CK/CK/RB/TK/TK/TK/BTK</b>
Glasgow-Stranraer	<b>BTK/CK/BTK/BG</b>

### Running numbers

26666-26755	built 1950	Derby	27006-27045	built 1950/51	Derby
26756-26880	built 1949/50	Wolverton	6030-6038	built 1950	Wolverton
26881-27005	built 1950	Wolverton	27046-27095	built 1950	Wolverton

### Livery

Coaches built around the time of nationalisation received maroon livery but without company insignia. Many went directly into BR crimson and cream. From 1956/7 BR maroon with simple lining was adopted. Number and lettering styles, insignia and class designation placement did not always follow the changes of livery. For further information on a particular vehicle at a specific date please consult references and photographs.

Coaches left the works with the roof finished in a metallic aluminium paint. However, in service the roofs quickly took on an overall muddy grey colour.

Underframes and bogies were finished in black

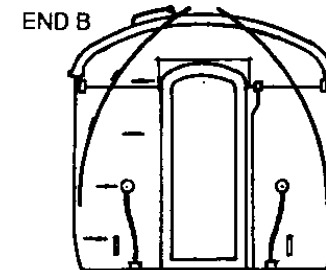
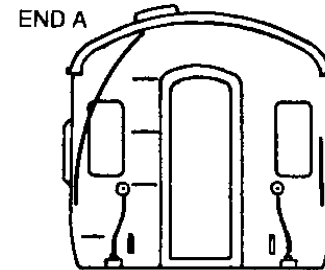
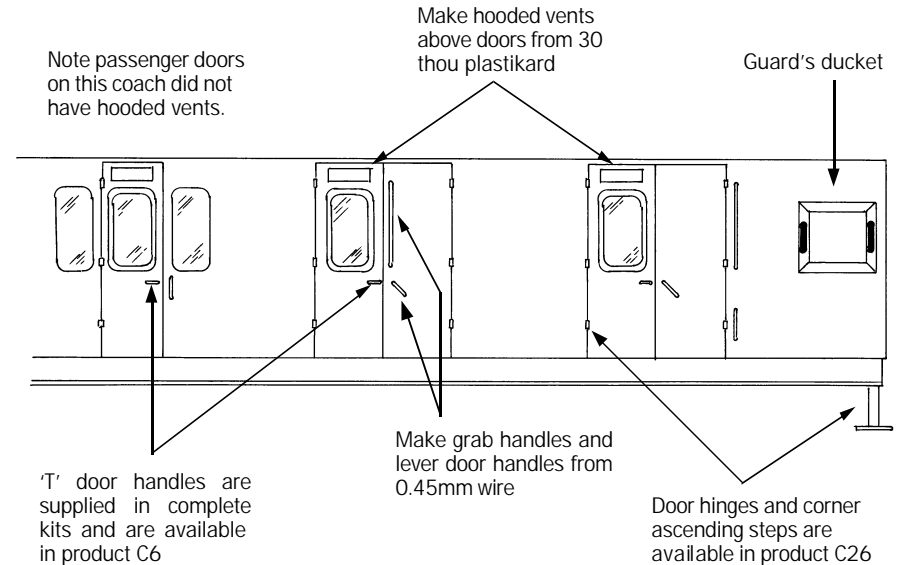
### Further information

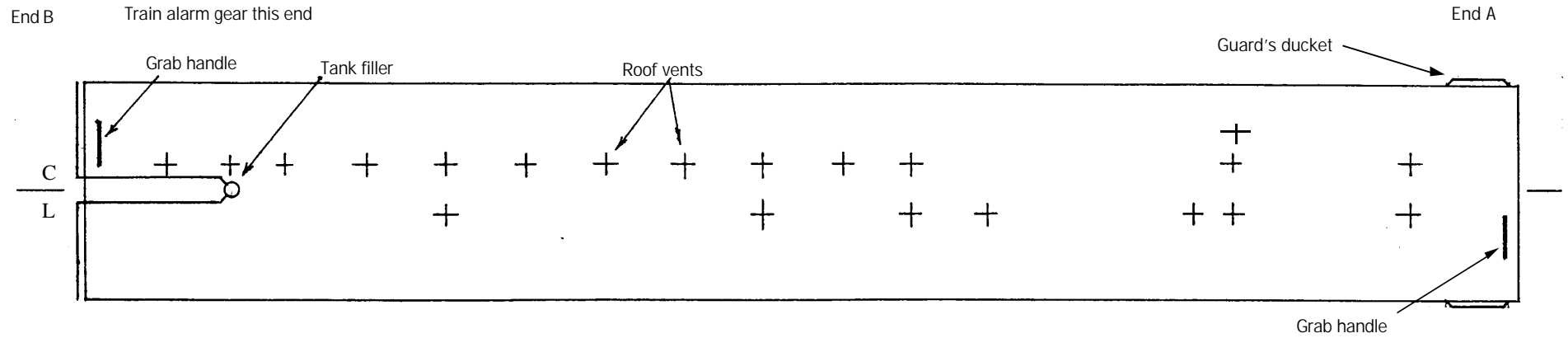
LMS Coaches	Jenkinson & Essery	O.P.C.
Historic Carriage Drawings	Jenkinson & Campling	Ian Allan
Passenger Train Formations		
1923-1983 LMS LM Region	Clive S Carter	Ian Allan

COMET MODELS coach components required to complete this coach are as follows

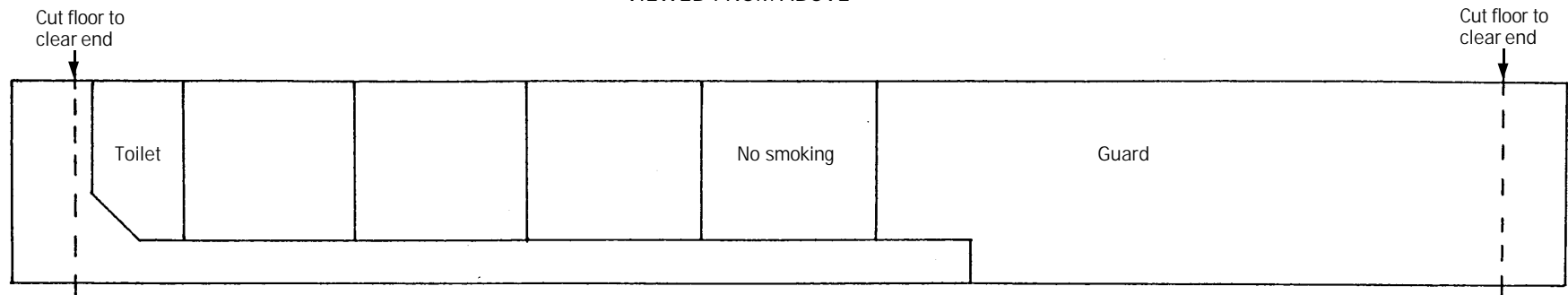
Underframe	UM2	Bogies	BM3
Underframe castings	UCM1	Roof castings	RC3
Ends	EM4	End castings	ECM2
Roof	C10	Interior	INT2
Duckets	C15		

Scrap view showing additional detailing of sides





ROOF AND INTERIOR PLANS  
VIEWED FROM ABOVE



UNDERFRAME VIEWED FROM BELOW

