

M45 LMS Stanier CORRIDOR BRAKE THIRD

D2123

Introduced 1948, last withdrawn 1970's

57'

These etched sides can be built into a complete coach using products from our range as supplied in our full kits. Please refer to the panel opposite. Should you prefer they can also be used for scratchbuilding.

The 120 coaches in this diagram featured an extra door in the corridor side and a reduction in the compartment length from 6'6" to 6'3". Withdrawn from revenue service by 1967 but some survived in departmental stock.

Sample formations

Midland Division sets	BTK/TK/CK/BTK
Pines Express 1949	BTK/CK/BCK/CK/CK/RC/TO/TO/TO/TK/BTK
Liverpool-Hull 1954	TK/BTK/CK/CK/RB/TK/TK/TK/BTK
Glasgow-Stranraer	BTK/CK/BTK/BG

Running numbers

26546-26665 built 1948/9 Derby

Livery

The LMS coach body colour was maroon with black ends. Simple lining was adopted at the beginning of 1934. In 1946 the yellow was replaced with a much lighter shade referred to as 'straw'. From 1949 coaches received BR crimson and cream. From 1956/7 BR maroon with simple lining was adopted.

Number and lettering styles, insignia and class designation placement did not always follow the changes of livery. For further information on a particular vehicle at a specific date please consult references and photographs.

Coaches left the works with the roof finished in a metallic aluminium paint. However, in service this quickly took on an overall muddy grey colour.

Underframes and bogies were finished in black

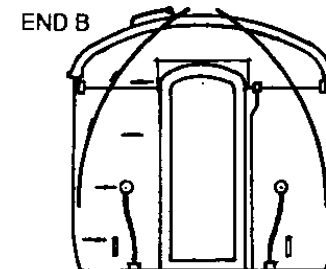
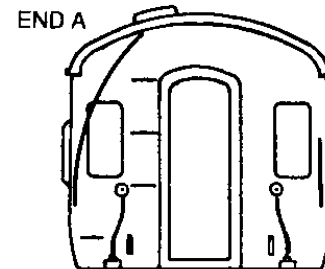
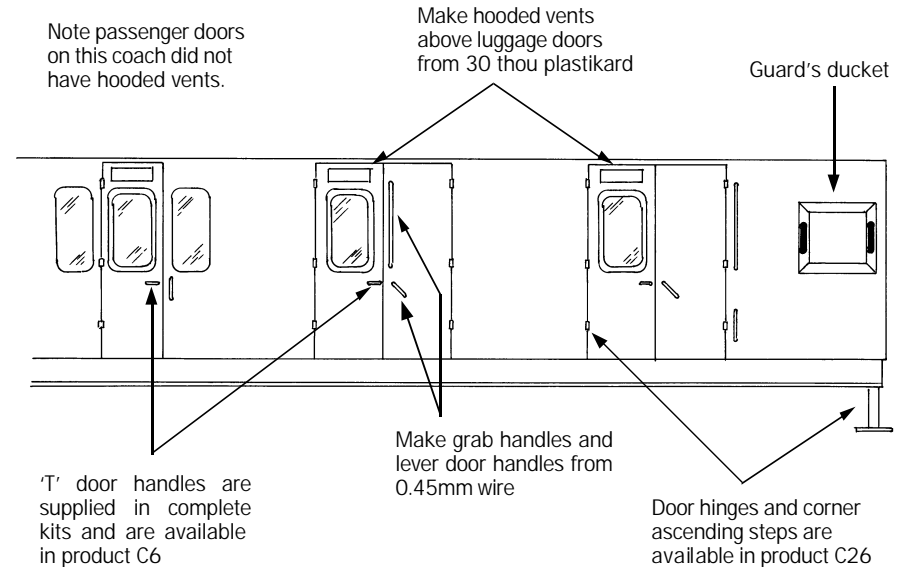
Further information

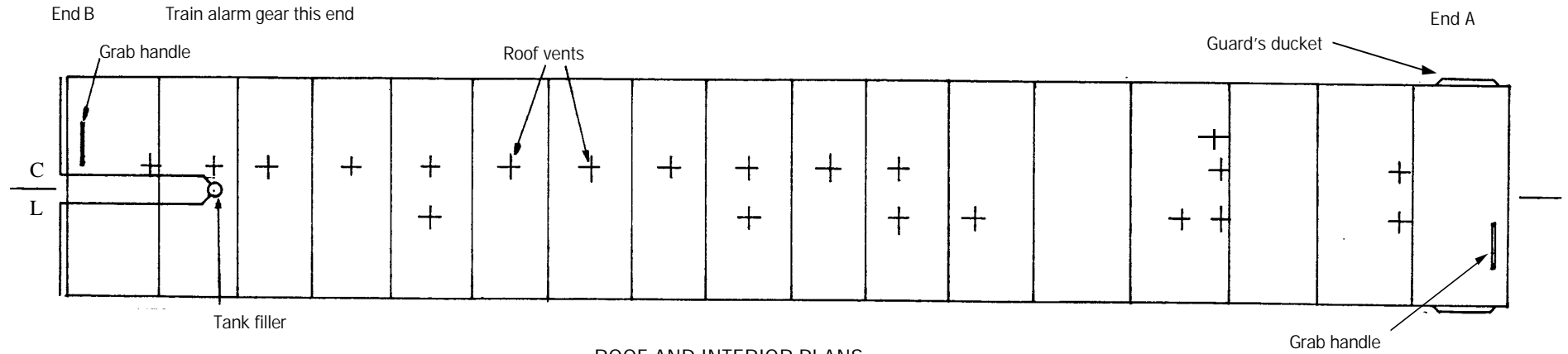
LMS Coaches	Jenkinson & Essery	O.P.C.
Historic Carriage Drawings	Jenkinson & Campling	Ian Allan
Passenger Train Formations		
1923-1983 LMS LM Region	Clive S Carter	Ian Allan

COMET MODELS coach components required to complete this coach are as follows

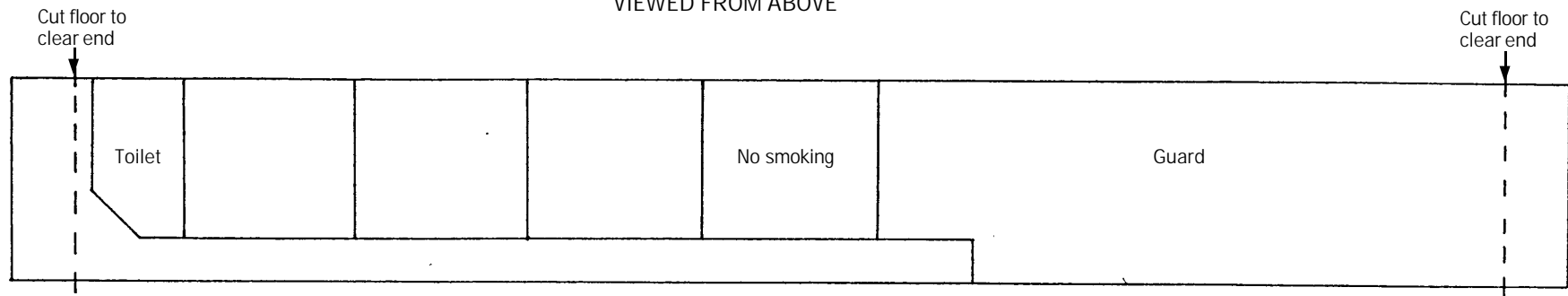
Underframe	UM2	Bogies	BM3
Underframe castings	UCM1	Roof castings	RC2
Ends	EM4	End castings	ECM2
Roof	C10	Interior	INT2
Duckets	C15		

Scrap view showing additional detailing of sides





ROOF AND INTERIOR PLANS
VIEWED FROM ABOVE



UNDERFRAME VIEWED FROM BELOW

