

M36 LMS Stanier CORRIDOR BRAKE FIRST (PORTHOLE STOCK) D2168

Introduced 1949, last withdrawn 1965 60'

These etched sides can be built into a complete coach using products from our range as supplied in our full kits. Please refer to the panel opposite. Should you prefer they can also be used for scratchbuilding.

Although an LMS design, these 15 luxurious and distinctive coaches, with their round 'Porthole' toilet windows, were built at Wolverton by BR. They remained in front rank services until the advent of the BR Mark 1 brake firsts in 1959.

Sample formations

Thames-Clyde 1949 TO/BTK/TK/TK/TK/TK/TO/RF/FK/**BFK**/BG  
 Irish Mail 1949 BG/SLT/SLF/TK/TK/TO/TO/TO/FO/FK/**BFK**/BG/BG/BG/BG  
 Caledonian 1958 BSK/SO/SO/SO/RC\*/FO/**BFK** \*  
 BR Mk1 stock except those marked\*

Running numbers

5063-5077 'M' prefixed

Livery

Coaches built around the time of nationalisation received maroon livery but without company insignia. Many went directly into BR crimson and cream. From 1956/7 BR maroon with simple lining was adopted. Number and lettering styles, insignia and class designation placement did not always follow the changes of livery. For further information on a particular vehicle at a specific date please consult references and photographs.

Coaches left the works with the roof finished in a metallic aluminium paint. However, in service the roofs quickly took on an overall muddy grey colour.

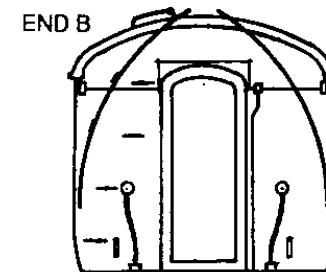
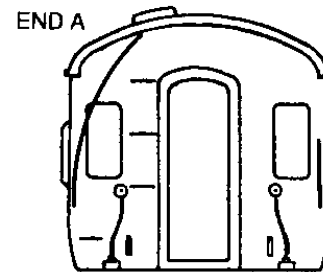
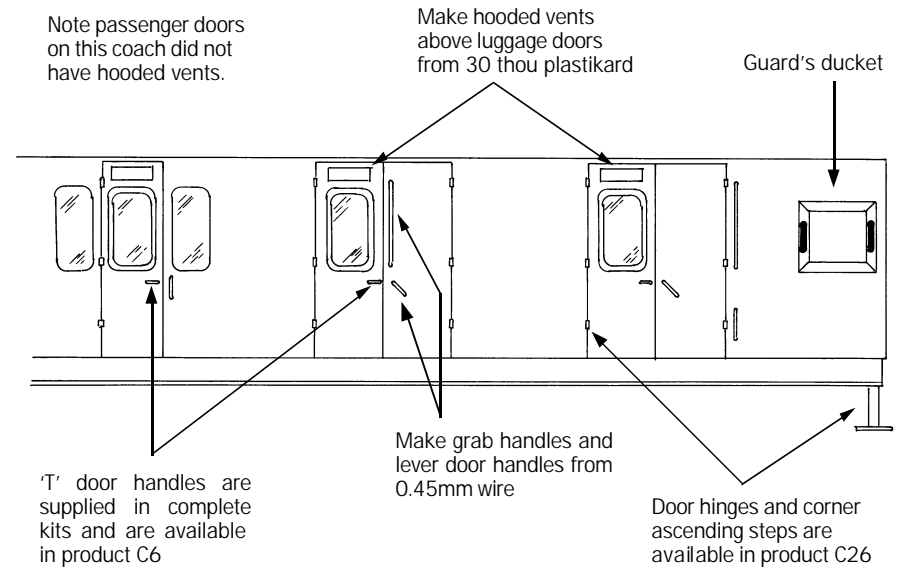
Underframes and bogies were finished in black

Further information

LMS Coaches	Jenkinson & Essery	O.P.C.
Historic Carriage Drawings	Jenkinson & Campling	Ian Allan
Passenger Train Formations 1923-1983 LMS LM Region	Clive S Carter	Ian Allan

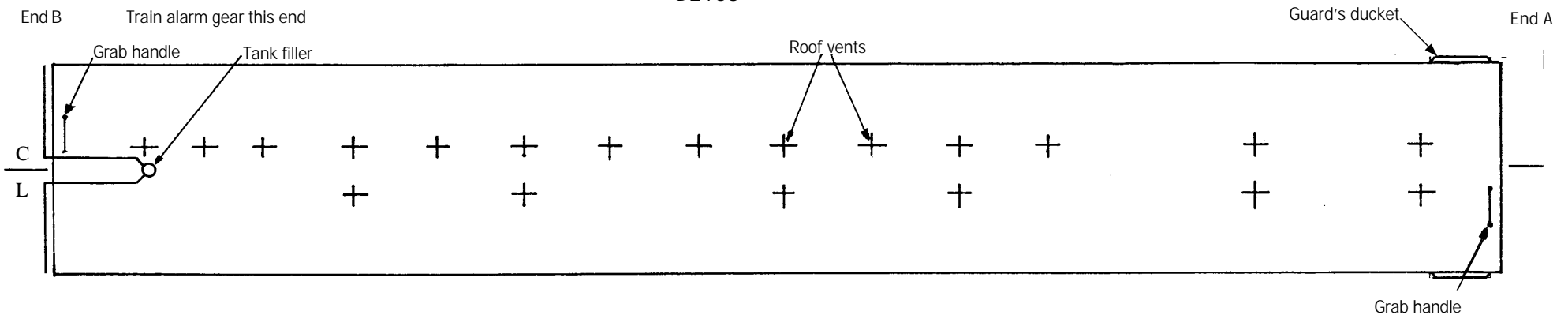
COMET MODELS coach components required to complete this coach are as follows			
Underframe	UM2	Bogies	BM3
Underframe castings	UCM1	Roof castings	RC3
Ends	EM4	End castings	ECM2
Roof	C10	Interior	INT2
Duckets	C15		

Scrap view showing additional detailing of sides

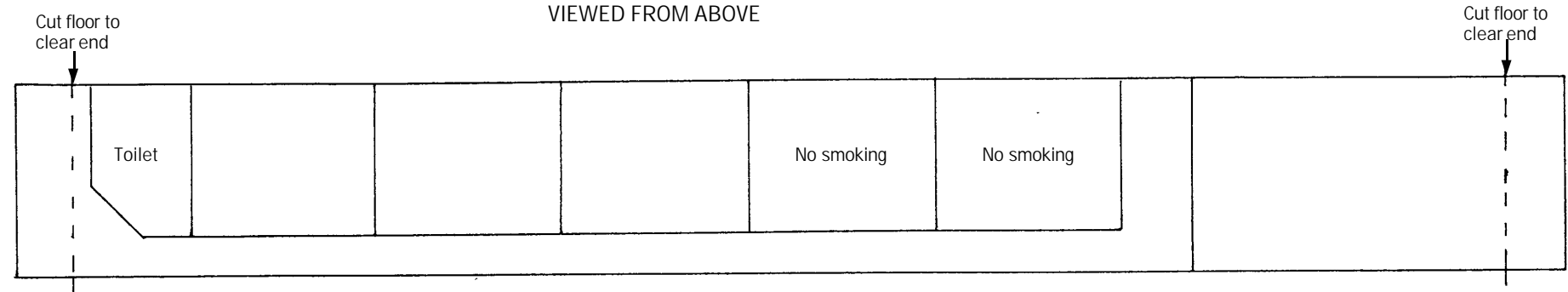


D2168

09/01/06



ROOF AND INTERIOR PLANS  
VIEWED FROM ABOVE



UNDERFRAME VIEWED FROM BELOW

