

M33 LMS Stanier OPEN FIRST (PORTHOLE STOCK)

D2160

Introduced 1948, last withdrawn 1965

60'

These etched sides can be built into a complete coach using products from our range as supplied in our full kits. Please refer to the panel opposite. Should you prefer they can also be used for scratchbuilding.

These 20 luxurious and distinctive coaches, with their round 'Porthole' toilet windows, were the last design of LMS vestibule or open stock to be built. They were used on premier and express workings, and would often be marshalled next to a full kitchen car or kitchen diner.

Sample formations

Midday Scot 1949

TK/TK/BTK/TK/TO/TO/RK/RFO/FO/CK/BTK/CK/TK/BG

Irish Mail 1949

BG/SLT/SLT/TK/TK/TO/TO/TO/FO/FK/BG/BG/BG

Welshman 1949

BTK/TO/TO/CK/BCK/RT/FO/BTK/CK/CK/BTK/TO/CK/BTK
 I Holyhead I P'madoc I Pwllheli I Llandudno I

St Pancras-Manchester 1955

BTK/TK/TK/CK/FO*/CK/BTK/BCK*/RB*/BTK*
 BR Mk1 stock except those marked*

Running numbers

7465-7484 'M' prefixed

Livery

Coaches built around the time of nationalisation received maroon livery but without company insignia. Many went directly into BR crimson and cream. From 1956/7 BR maroon with simple lining was adopted. Number and lettering styles, insignia and class designation placement did not always follow the changes of livery. For further information on a particular vehicle at a specific date please consult references and photographs.

Coaches left the works with the roof finished in a metallic aluminium paint. However, in service the roofs quickly took on an overall muddy grey colour.

Underframes and bogies were finished in black

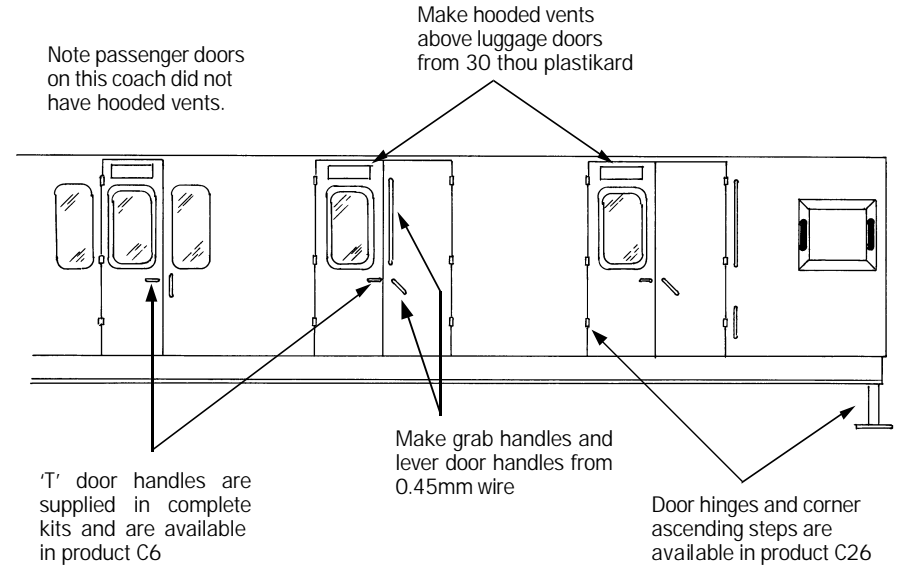
Further information

LMS Coaches	Jenkinson & Essery	O.P.C.
Historic Carriage Drawings	Jenkinson & Campling	Ian Allan
Passenger Train Formations		
1923-1983 LMS LM Region	Clive S Carter	Ian Allan

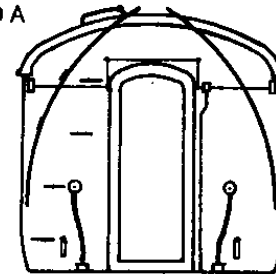
COMET MODELS coach components required to complete this coach are as follows

Underframe	UM2	Bogies	BM3
Underframe castings	UCM1	Roof castings	RC3
Ends	EM3	End castings	ECM2
Roof	C10	Interior	INT3

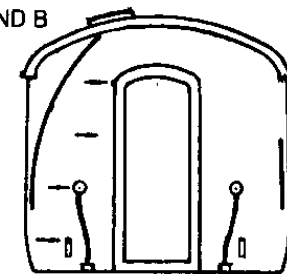
Scrap view showing additional detailing of sides



END A

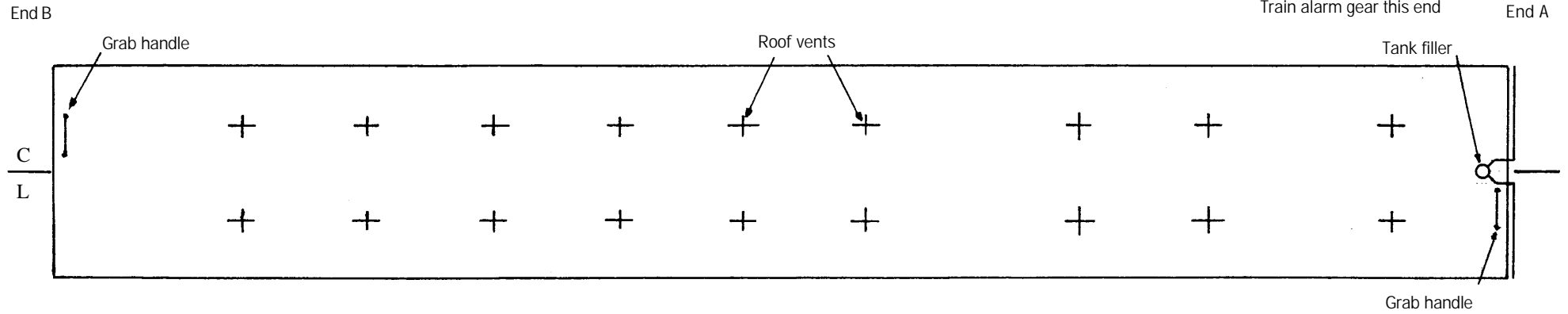


END B

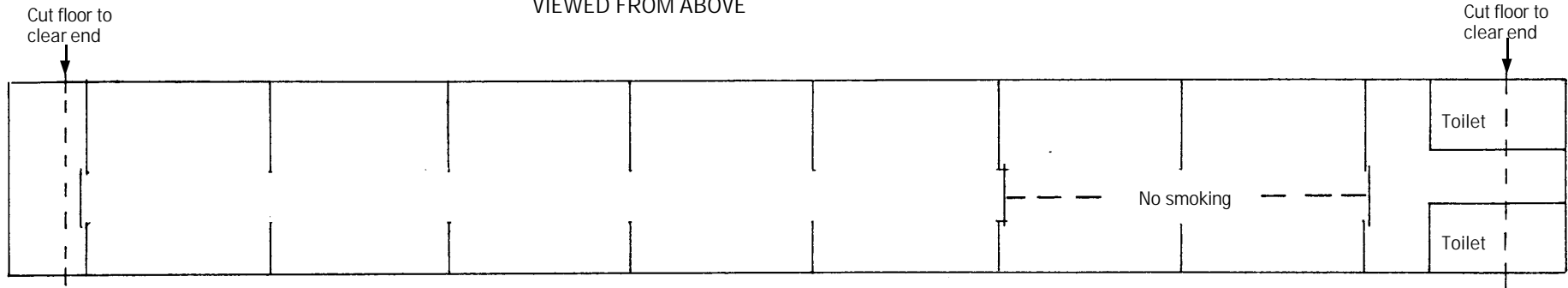


D2160

08/01/06



ROOF AND INTERIOR PLANS
VIEWED FROM ABOVE



UNDERFRAME VIEWED FROM BELOW

