

M32 LMS Stanier CORRIDOR FIRST (PORTHOLE STOCK)

D2162

Introduced 1950, last withdrawn 1965

57'

These etched sides can be built into a complete coach using products from our range as supplied in our full kits. Please refer to the panel opposite. Should you prefer they can also be used for scratchbuilding.

Although an LMS design, these 15 luxurious and distinctive coaches, with their round 'Porthole' toilet windows, were built at Wolverton by BR. They were apparently unlucky coaches as two were involved in the Weedon accident and one in the Harrow disaster.

Sample formations

Euston-Wolverhampton

BTK/TO/RTO/RK/RFO/**FK**/BTK

Euston-Stranraer-Perth-Aberdeen 1954

BTK/TK/TK/CK/**FK**/BTK/BTK/TK/TO/RT/CO/CO/BFK
 | Glasgow | Perth |

Irish Mail 1949

BG/SLT/SLT/TK/TK/TO/TO/TO/FO/**FK**/BG/BG/BG

Running numbers

1114-1128 'M' prefixed

Livery

Coaches built around the time of nationalisation received maroon livery but without company insignia. Many went directly into BR crimson and cream. From 1956/7 BR maroon with simple lining was adopted. Number and lettering styles, insignia and class designation placement did not always follow the changes of livery. For further information on a particular vehicle at a specific date please consult references and photographs.

Coaches left the works with the roof finished in a metallic aluminium paint. However, in service the roofs quickly took on an overall muddy grey colour.

Underframes and bogies were finished in black

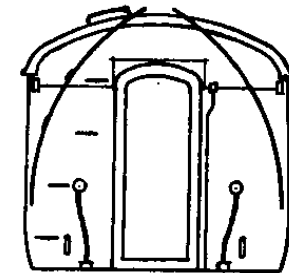
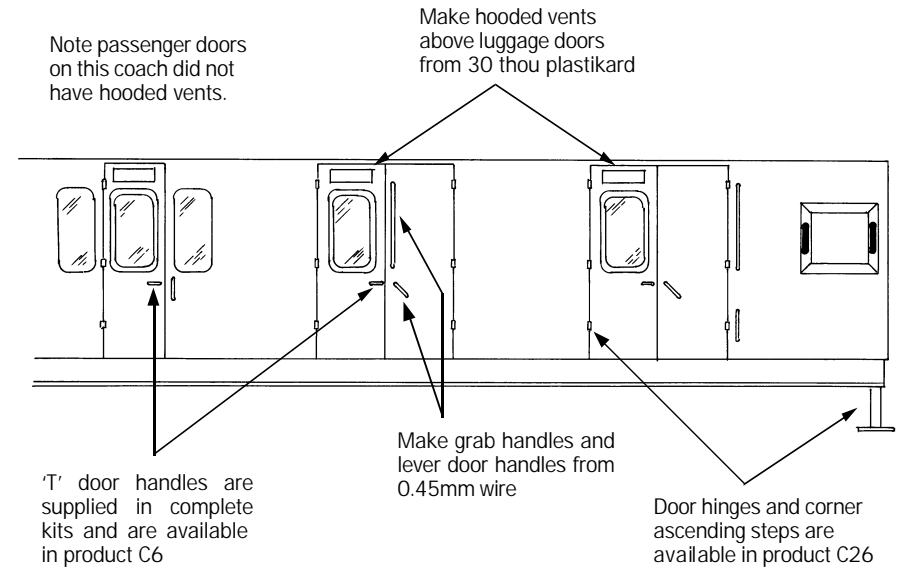
Further information

LMS Coaches	Jenkinson & Essery	O.P.C.
Historic Carriage Drawings	Jenkinson & Campling	Ian Allan
Passenger Train Formations 1923-1983 LMS LM Region	Clive S Carter	Ian Allan

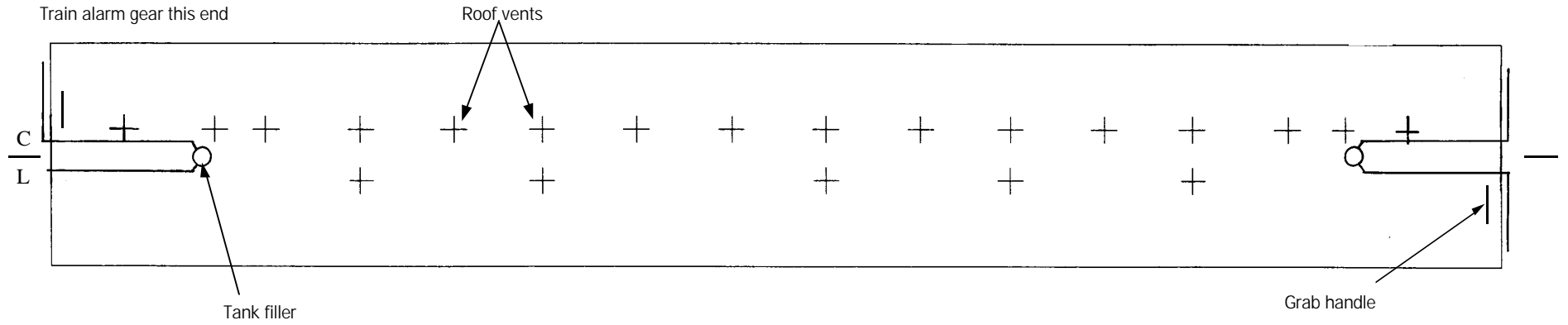
COMET MODELS coach components required to complete this coach are as follows

Underframe	UM2	Bogies	BM3
Underframe castings	UCM1	Roof castings	RC3
Ends	EM3	End castings	ECM2
Roof	C10	Interior	INT2

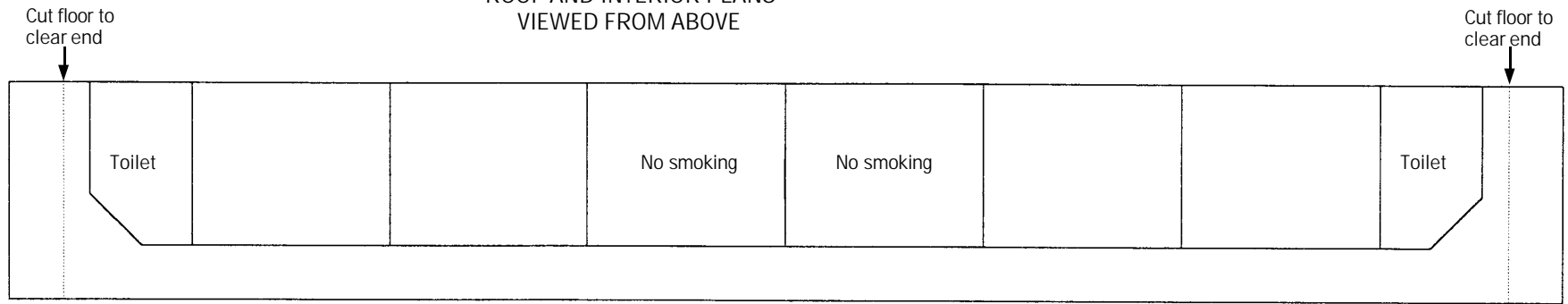
Scrap view showing additional detailing of sides



The ends are identical except that the train alarm gear is only fitted at the end shown on the roof plan overleaf



ROOF AND INTERIOR PLANS
VIEWED FROM ABOVE



UNDERFRAME VIEWED FROM BELOW

