

M30 LMS Stanier CORRIDOR FIRST

D1909/1930/1960

Introduced 1934, last withdrawn 1965

57'

These etched sides can be built into a complete coach using products from our range as supplied in our full kits. Please refer to the panel opposite. Should you prefer they can also be used for scratchbuilding.

These coaches were built to a standard 5½ compartment design for use on premier expresses. The earlier batch to D1909 had luxury two per side seating. In 1937 3 of the D1930 coaches were rebuilt with 2 a side seating and pressure ventilation to D1960 for use in the Coronation Scot.

Sample formations

Euston-Wolverhampton

BTK/TO/RT0/RK/RFO/**FK**/BTK

BTK/TK/**FK**/RC0/RT/TK/BTK

Coronation Scot 1937

BTK/TO/RK/TO/TO/RK/RFO/**FK**/BTK

Thames-Clyde 1949

TO/BTK/TK/TK/TK/TKTO/RF/**FK**/BTK/BG

Running numbers

D1909 1039-1050 built 1934

Derby

D1930 1051-1083 built 1936

Derby

1069-71 rebuilt to D1960 in 1937

Livery

The LMS coach body colour was maroon with black ends. Simple lining was adopted at the beginning of 1934. In 1946 the yellow was replaced with a much lighter shade referred to as 'straw'. From 1949 coaches received BR crimson and cream. From 1956/7 BR maroon with simple lining was adopted.

Number and lettering styles, insignia and class designation placement did not always follow the changes of livery. For further information on a particular vehicle at a specific date please consult references and photographs.

Coaches left the works with the roof finished in a metallic aluminium paint. However, in service this quickly took on an overall muddy grey colour.

Underframes and bogies were finished in black

Further information

LMS Coaches
Historic Carriage Drawings

Jenkinson & Essery
Jenkinson & Campling

O.P.C.
Ian Allan

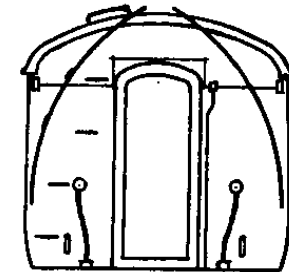
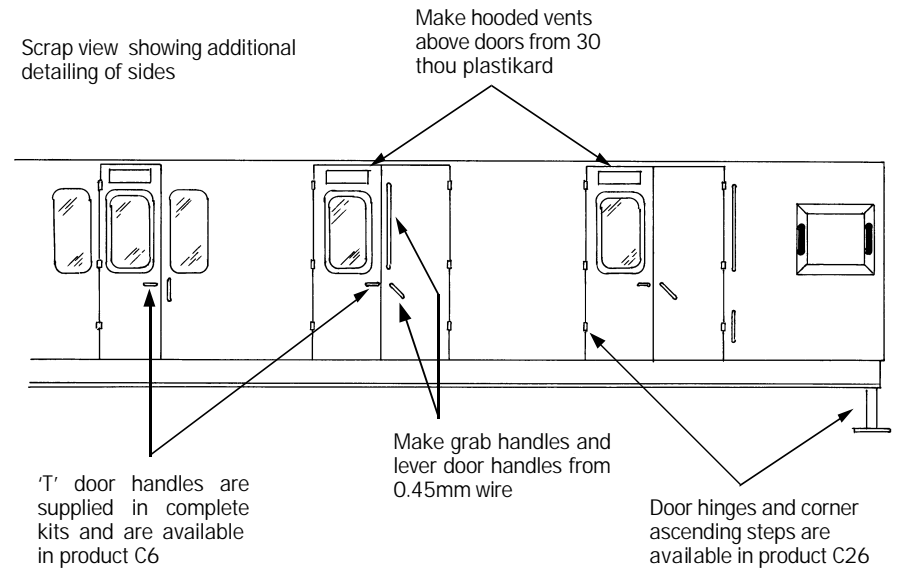
Passenger Train Formations
1923-1983 LMS LM Region

Clive S Carter

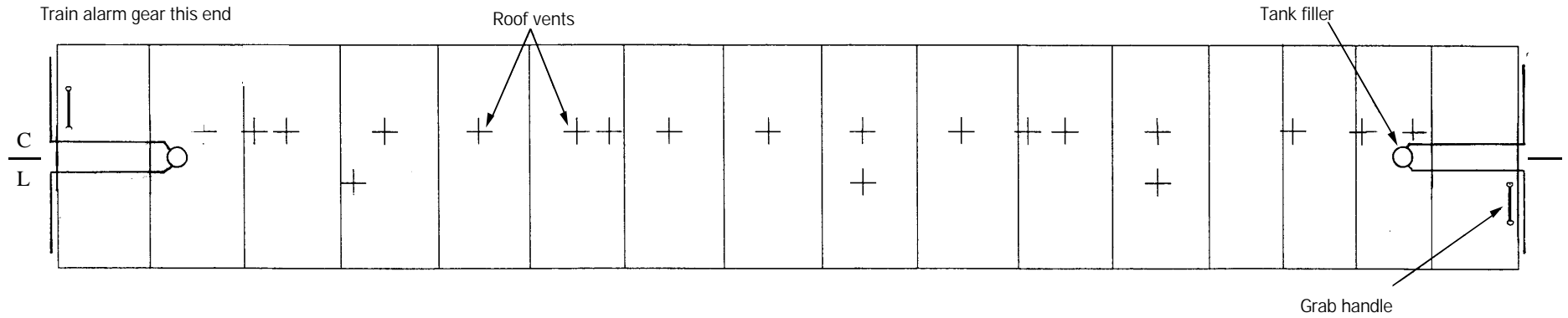
Ian Allan

COMET MODELS coach components required to complete this coach are as follows

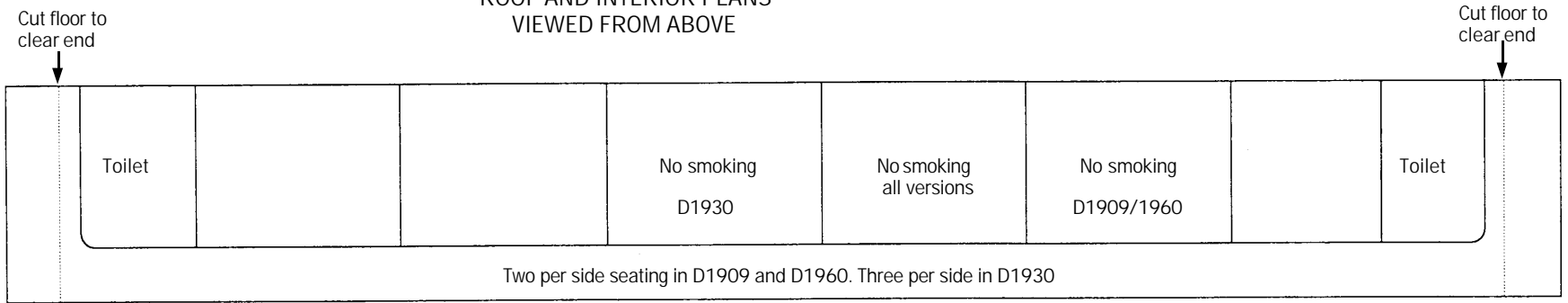
Underframe	UM2	Bogies	BM3
Underframe castings	UCM1	Roof castings	RC2
Ends	EM3	End castings	ECM2
Roof	C10	Interior	INT2



The ends are identical except that the train alarm gear is only fitted at the end shown on the roof plan overleaf



ROOF AND INTERIOR PLANS VIEWED FROM ABOVE



UNDERFRAME VIEWED FROM BELOW

