

M17 LMS Period I CORRIDOR BRAKE THIRD

D1696

Introduced 1926, last withdrawn 1962

57'

These etched sides can be built into a complete coach using products from our range as supplied in our full kits. Please refer to the panel opposite. Should you prefer they can also be used for scratchbuilding.

This diagram was the last LMS corridor coach to have compartment doors. They were built at Derby to a total of 125, and were allocated to main line services. During the Second World War 80 were sent overseas, and many did not return. Those that did come back were converted at Wolverton between 1946 and 1949 to full brakes to diagrams D2129 and D2130.

Sample formations

Euston-Wolverhampton 'Corridor Sets'	BTK/CK/RF/TO/CK/BTK
	BTK/CK/TK/BTK
	BTK/CK/TO/BTK
Euston-Wolverhampton	BTK/CK/RF/TO/CK/BTK

Running numbers

5222-5321 built 1926 5322-5346 built 1929/30 all built at Derby

Livery

The LMS coach body colour was maroon. Ends were also maroon with the detail picked out in black, but from the end of 1936 they were painted all over black. Fully panelled livery was applied with lining in black and gold leaf, later yellow. On flush sided coaches the lining was laid out as though the coach was panelled (so called 'psuedo-panelling') sometimes the verticals were at the edges of the window frames, otherwise they were on the centre of the panel between them. Simple lining was adopted at the beginning of 1934. In 1946 the yellow was replaced with a much lighter shade referred to as 'straw'. From 1949 coaches received BR crimson and cream. From 1956/7 BR maroon with simple lining was adopted.

Number and lettering styles, insignia and class designation placement did not always follow the changes of livery. For further information on a particular vehicle at a specific date please consult references and photographs.

Early coaches received lead grey roofs with black between the cantrail and rainstrip. All steel and later flush sided coaches had a metallic aluminium paint finish. However, in service the roof quickly took on an overall muddy grey colour.

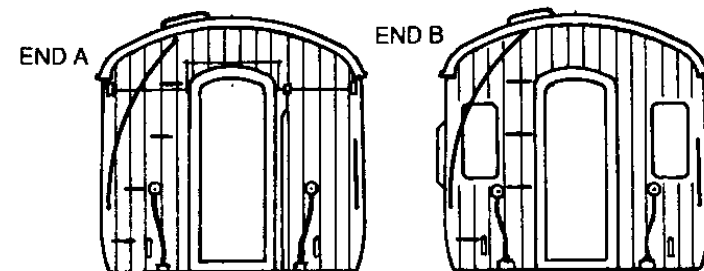
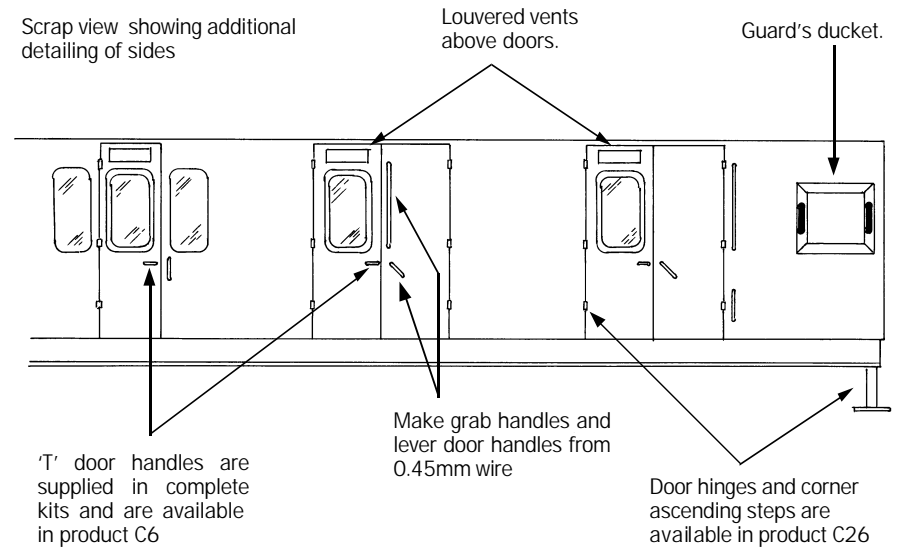
Underframes and bogies were finished in black

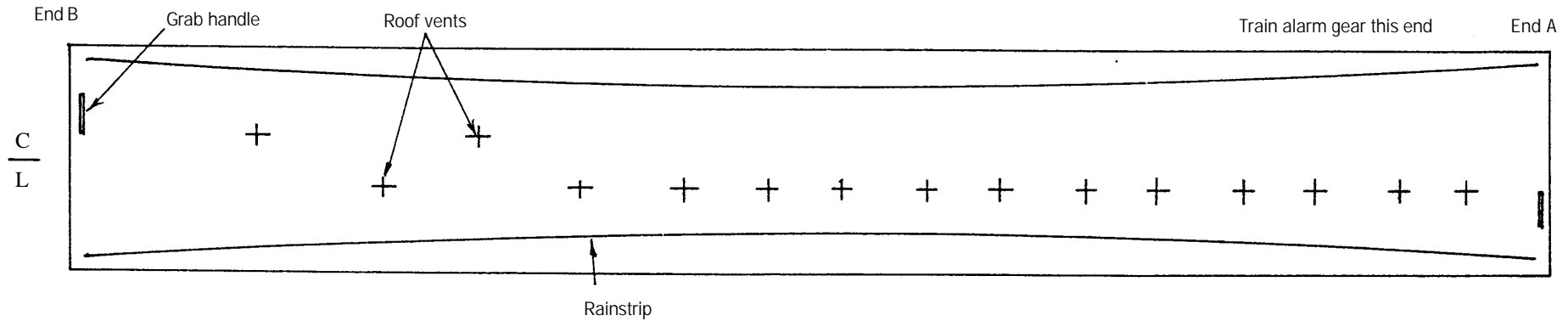
Further information

LMS Coaches	Jenkinson & Essery	O.P.C.
Historic Carriage Drawings	Jenkinson & Campling	Ian Allan
Passenger Train Formations		
1923-1983 LMS LM Region	Clive S Carter	Ian Allan

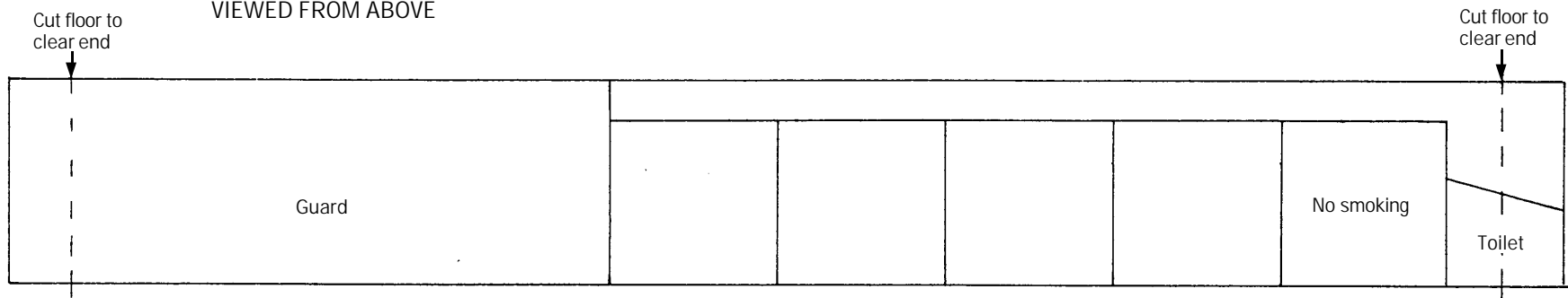
COMET MODELS coach components required to complete this coach are as follows

Underframe	UM2	Bogies	BM2
Underframe castings	UCM1	Roof castings	RC1
Ends	EM2	End castings	ECM1
Roof	C10	Interior	INT1
Duckets	C15		





ROOF AND INTERIOR PLANS
VIEWED FROM ABOVE



UNDERFRAME VIEWED FROM BELOW

